

# The Windsong Home Design

Woodbridge Pacific Group

# COTINO™

A STORYLIVING BY Disney™ COMMUNITY



Computer-generated image shown; preliminary home concept by Woodbridge Pacific Group, not yet built and subject to change. © Disney

## EXTERIOR: COTINO ASPIRON COLLECTION

**3**  
BEDROOMS

**3**  
BATHROOMS

**1**  
½ BATHROOMS

**3**  
GARAGE SPACES

**1**  
STORIES

**3,516\***  
APPROXIMATE SQ.FT.

*Square footage varies by home elevation, see sales guide for details.*

Discover your creative oasis at Cotino™, the first Storyliving by Disney™ community. Enjoy breathtaking mountain views, charming parks and a promenade around Cotino™ Bay, the jewel of the community.

Cotino community welcomes you to experience life with the Disney touch—and make your next chapter the best one yet.

### \* DESIGN COLLECTIONS APPROXIMATE SQ.FT.

Cotino Aspiro Collection	3,516 Sq. Ft.
Cotino Oasis Collection	3,472 Sq. Ft.
Cotino Coachella Collection	3,470 Sq. Ft.

## THE ESTATE COLLECTION

**wpg** | Woodbridge Pacific Group

## Highlights

- › Lovely private front courtyard with entry gate
- › Dramatic great room with optional sliding glass doors that connect seamlessly with the outside
- › Primary bedroom set apart for privacy; luxurious primary bathroom and walk-in closet
- › 2 secondary bedrooms with ensuite bathrooms and adjoining seating area
- › Spacious kitchen with large island
- › Flex space for multiple uses, such as a game room (includes wet bar, counter and seating space)
- › Additional flex space for office or personalized use
- › Covered outdoor spaces for indoor/outdoor living

Obtain the Property Report required by Federal law and read it before signing anything. No Federal agency has judged the merits or value, if any, of this property.

# The Windsong Home Design

Woodbridge Pacific Group

# COTINO™

A STORYLIVING BY Disney™ COMMUNITY



*Computer-generated image shown; preliminary home concept by Woodbridge Pacific Group, not yet built and subject to change. © Disney*

EXTERIOR: COTINO COACHELLA COLLECTION



*Computer-generated image shown; preliminary home concept by Woodbridge Pacific Group, not yet built and subject to change. © Disney*

EXTERIOR: COTINO OASIS COLLECTION

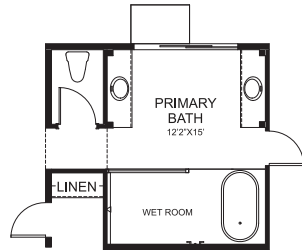
# The Windsong Home Design

Woodbridge Pacific Group

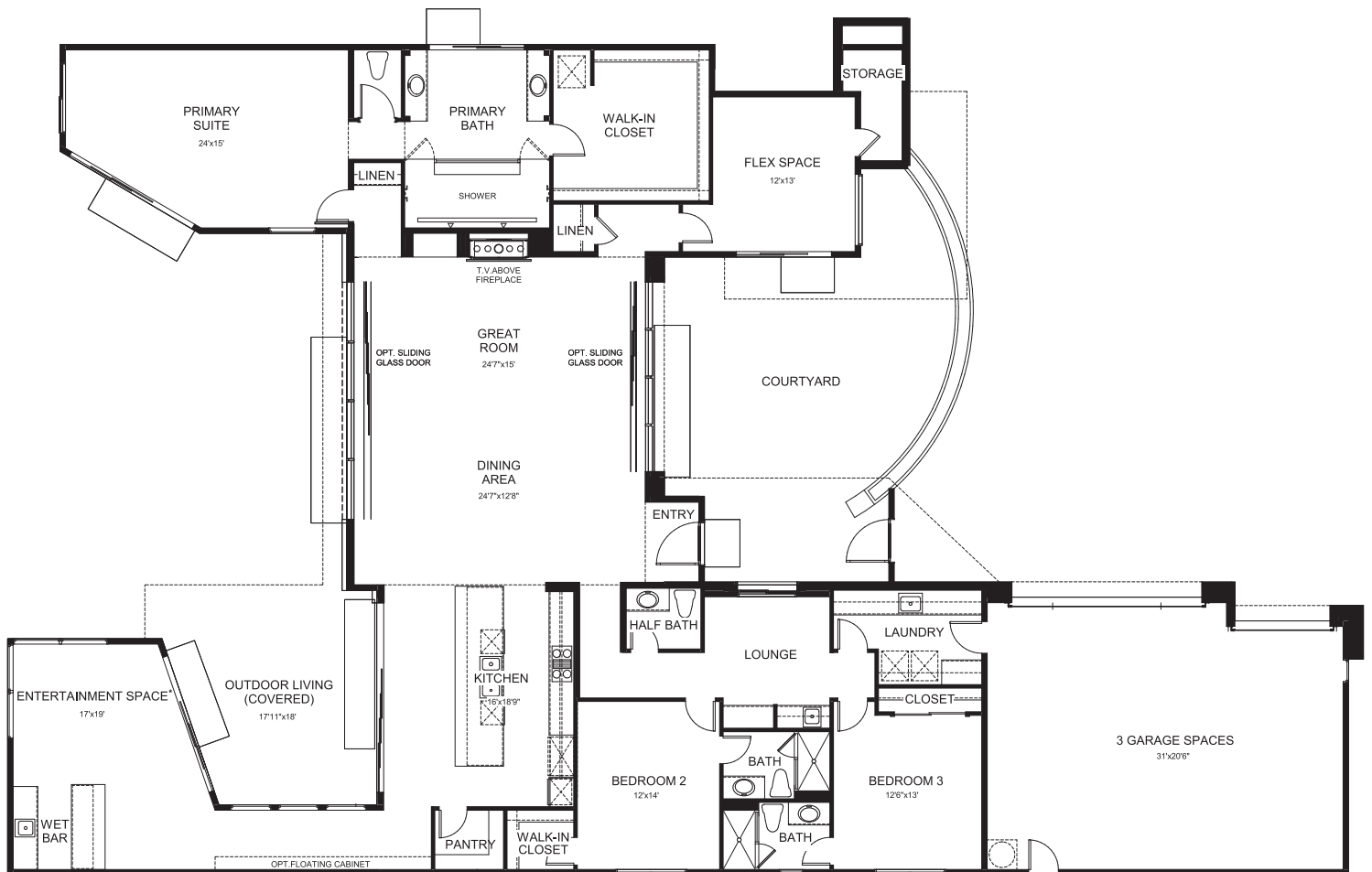
# COTINO

A STORYLIVING BY Disney COMMUNITY

## FLOOR PLAN: COTINO ASPIRON COLLECTION



OPTIONAL PRIMARY BATH



\* Entertainment Space = Game Room

Images are for illustration purposes only and may not reflect the details or landscaping of the finished home. No guarantee is made that the features depicted or described will be built, or if built, will be in the same location or of the same type, size or nature depicted or described. Builder reserves the right to change or discontinue plans without notice. Dimensions and square footage are approximate. Features shown may not be included in the base home and may be options to be ordered separately at an additional cost. See a Sales Guide for complete and current information.

# COTINO™

---

A STORYLIVING BY  COMMUNITY

This material contains general information about proposed plans for *Cotino*™, a *Storyliving by Disney*™ community, which plans are subject to change or cancellation in part or whole, at any time without notice. No guarantee is made that the features and amenities depicted or described will be built, or if built, will be the same type, size, or nature as depicted or described. Builders and homes assigned to lots are based on current development plans which are subject to change without notice. Residential community is Disney branded and managed, developed by DMB Development with homes built and sold by third-party builders. The parties developing, and building homes in, *Storyliving by Disney* communities are independently owned and operated. Woodbridge Pacific Group is a participating builder in the *Cotino* community and uses Disney trademarks under a license agreement from Disney. Disney has not confirmed the accuracy of any of the statements or representations made about the homes and does not make any representations or warranties or guarantees whatsoever with respect to the homes. This does not constitute an offer to sell, or a solicitation to buy, real estate to residents of any state, province or jurisdiction where prohibited by law, or where prior registration or filing of a disclosure statement is required, but has not yet been completed. PENNSYLVANIA REGISTRATION No. OL001186. Equal Housing Opportunity. Broker participation welcome. See [StorylivingbyDisney.com](http://StorylivingbyDisney.com) for full details.

*Storyliving by Disney* Realty, CA DRE License No. 02194403. AZ broker: Silverleaf Realty, LLC.

**ALBERTA & BRITISH COLUMBIA RESIDENTS:**

*Cotino*™ community AB & BC broker: Rennie & Associates Realty, 1-888-395-0004

*Cotino* community developer: ECRM Residential, Limited Partnership: 1-480-367-2600. 7600 East Doubletree Ranch Road, #250, Scottsdale, Arizona 85258-2136

# The Windsong II Home Design

Woodbridge Pacific Group

# COTINO™

A STORYLIVING BY Disney™ COMMUNITY



Computer generated image; preliminary home concept by Woodbridge Pacific Group, not yet built and subject to change. © Disney

## EXTERIOR: COTINO ASPIRON COLLECTION

4

BEDROOMS

4

BATHROOMS

1

½ BATHROOMS

3

GARAGE SPACES

2

STORIES

3,936\*

APPROXIMATE SQ.FT.

*Square footage varies by home elevation, see sales guide for details.*

Discover your creative oasis at Cotino™, the first Storyliving by Disney™ community. Enjoy breathtaking mountain views, charming parks and a promenade around Cotino™ Bay, the jewel of the community.

Cotino community welcomes you to experience life with the Disney touch—and make your next chapter the best one yet.

### \* DESIGN COLLECTIONS APPROXIMATE SQ.FT.

Cotino Aspiro Collection 3,936 Sq. Ft.

Cotino Oasis Collection 3,936 Sq. Ft.

Cotino Coachella Collection 3,936 Sq. Ft.

## THE ESTATE COLLECTION

**wpg** | Woodbridge Pacific Group

## Highlights

- › Lovely private front courtyard with entry gate
- › Dramatic great room with optional sliding glass doors that connect seamlessly with the outside
- › Primary bedroom set apart for privacy; luxurious primary bathroom and walk-in closet
- › 2 secondary bedrooms with ensuite bathrooms and adjoining seating area
- › Spacious kitchen with large island
- › Flex space for multiple uses, such as a game room (includes wet bar, counter and seating space)
- › Additional flex space for office or personalized use
- › Covered outdoor spaces for indoor/outdoor living
- › 2nd floor private guest suite with living room and kitchenette (accessible via outdoor front courtyard)

Obtain the Property Report required by Federal law and read it before signing anything. No Federal agency has judged the merits or value, if any, of this property.

# The Windsong II Home Design

Woodbridge Pacific Group

# COTINO™

A STORYLIVING BY Disney™ COMMUNITY



Computer generated image; preliminary home concept by Woodbridge Pacific Group, not yet built and subject to change. © Disney

EXTERIOR: COTINO COACHELLA COLLECTION



Computer generated image; preliminary home concept by Woodbridge Pacific Group, not yet built and subject to change. © Disney

EXTERIOR: COTINO OASIS COLLECTION

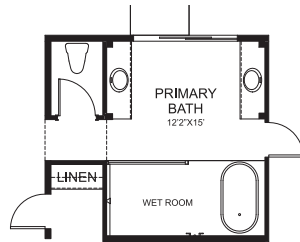
# The Windsong II Home Design

Woodbridge Pacific Group

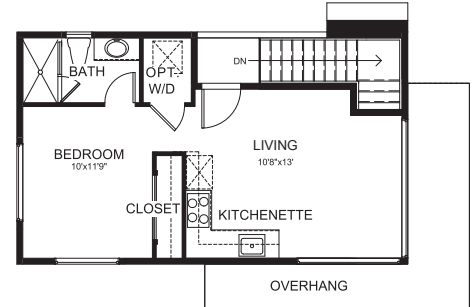
# COTINO™

A STORYLIVING BY Disney™ COMMUNITY

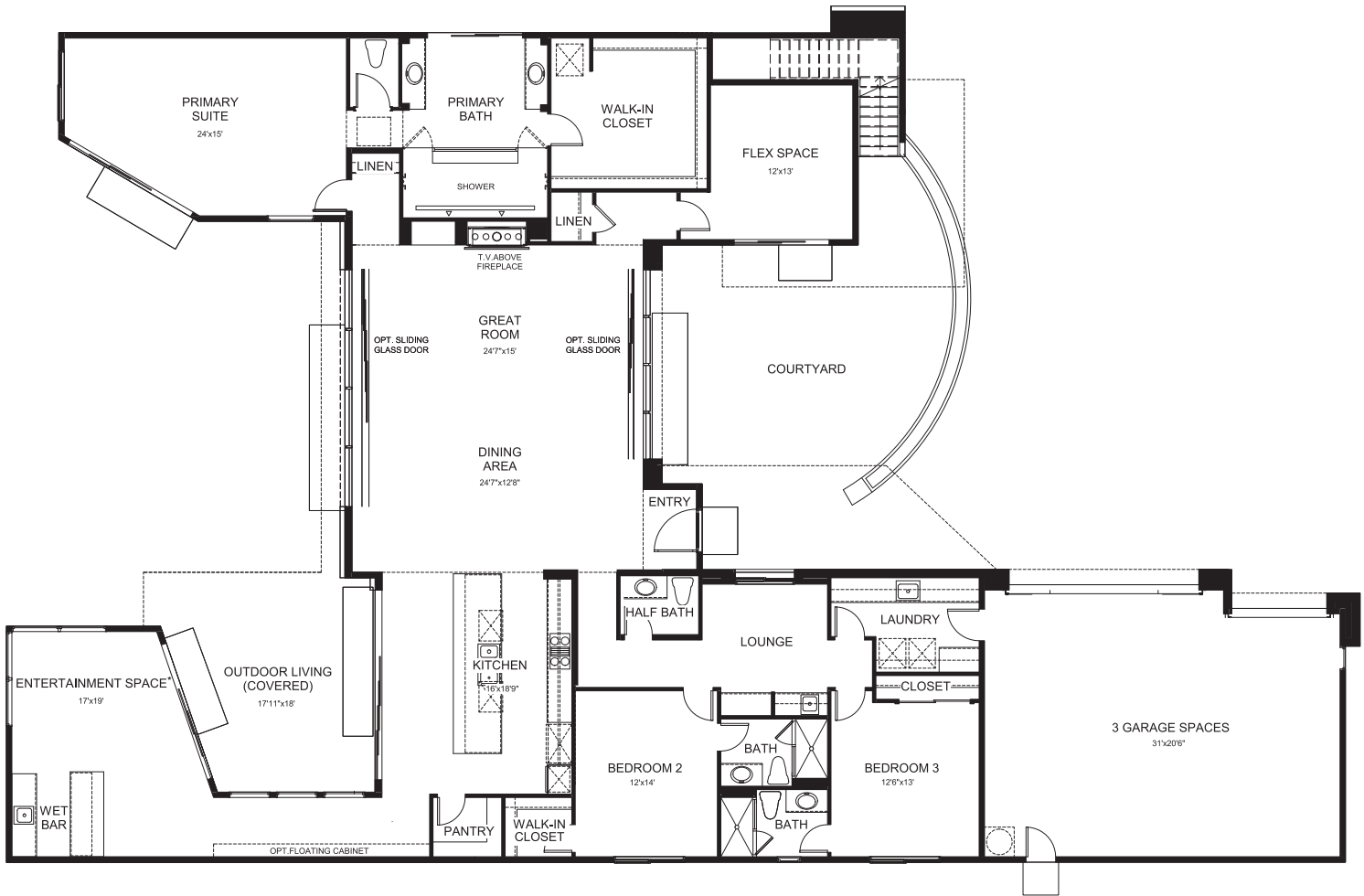
## FLOOR PLAN: COTINO ASPIRON COLLECTION



OPTIONAL PRIMARY BATH



SECOND FLOOR PRIVATE GUEST SUITE†



FIRST FLOOR

\* Entertainment Space = Game Room  
† Second Floor Private Guest Suite = Cabana

Images are for illustration purposes only and may not reflect the details or landscaping of the finished home. No guarantee is made that the features depicted or described will be built, or if built, will be in the same location or of the same type, size or nature depicted or described. Builder reserves the right to change or discontinue plans without notice. Dimensions and square footage are approximate. Features shown may not be included in the base home and may be options to be ordered separately at an additional cost. See a Sales Guide for complete and current information.

# COTINO™

---

A STORYLIVING BY  COMMUNITY

This material contains general information about proposed plans for *Cotino*™, a *Storyliving by Disney*™ community, which plans are subject to change or cancellation in part or whole, at any time without notice. No guarantee is made that the features and amenities depicted or described will be built, or if built, will be the same type, size, or nature as depicted or described. Builders and homes assigned to lots are based on current development plans which are subject to change without notice. Residential community is Disney branded and managed, developed by DMB Development with homes built and sold by third-party builders. The parties developing, and building homes in, *Storyliving by Disney* communities are independently owned and operated. Woodbridge Pacific Group is a participating builder in the *Cotino* community and uses Disney trademarks under a license agreement from Disney. Disney has not confirmed the accuracy of any of the statements or representations made about the homes and does not make any representations or warranties or guarantees whatsoever with respect to the homes. This does not constitute an offer to sell, or a solicitation to buy, real estate to residents of any state, province or jurisdiction where prohibited by law, or where prior registration or filing of a disclosure statement is required, but has not yet been completed. PENNSYLVANIA REGISTRATION No. OL001186. Equal Housing Opportunity. Broker participation welcome. See [StorylivingbyDisney.com](http://StorylivingbyDisney.com) for full details.

*Storyliving by Disney* Realty, CA DRE License No. 02194403. AZ broker: Silverleaf Realty, LLC.

**ALBERTA & BRITISH COLUMBIA RESIDENTS:**

*Cotino*™ community AB & BC broker: Rennie & Associates Realty, 1-888-395-0004

*Cotino* community developer: ECRM Residential, Limited Partnership: 1-480-367-2600. 7600 East Doubletree Ranch Road, #250, Scottsdale, Arizona 85258-2136

# The Daybreak Home Design

Woodbridge Pacific Group

COTINO™

A STORYLIVING BY Disney™ COMMUNITY



Computer-generated image shown; preliminary home concept by Woodbridge Pacific Group, not yet built and subject to change. © Disney

## EXTERIOR: COTINO ASPIRON COLLECTION

**3**  
BEDROOMS

**3**  
BATHROOMS

**2**  
½ BATHROOMS

**3**  
GARAGE SPACES

**1**  
STORIES

**3,538\***  
APPROXIMATE SQ.FT.

*Square footage varies by home elevation, see sales guide for details.*

Discover your creative oasis at Cotino™, the first Storyliving by Disney™ community. Enjoy breathtaking mountain views, charming parks and a promenade around Cotino™ Bay, the jewel of the community.

Cotino community welcomes you to experience life with the Disney touch—and make your next chapter the best one yet.

### \* DESIGN COLLECTIONS APPROXIMATE SQ.FT.

Cotino Aspiro Collection	3,538 Sq. Ft.
Cotino Agrarian Collection	3,527 Sq. Ft.
Cotino Oasis Collection	3,527 Sq. Ft.

## THE ESTATE COLLECTION

**wpg** | Woodbridge  
Pacific  
Group

## Highlights

- › Beautiful private front courtyard with entry gate
- › Great room with optional sliding glass doors that stack for greater openness to the outdoors; views of both the front courtyard and back yard
- › Primary bedroom with sitting room, spacious bathroom and walk-in closet
- › 2 secondary bedrooms with ensuite bathrooms
- › Expansive kitchen with large, dramatic island
- › Flex space for many uses, such as a game room (includes wet bar and counter seating)
- › Additional flex space for office or personal pursuits
- › Covered outdoor living for indoor/outdoor connectivity

Obtain the Property Report required by Federal law and read it before signing anything. No Federal agency has judged the merits or value, if any, of this property.

# The Daybreak Home Design

Woodbridge Pacific Group

# COTINO™

A STORYLIVING BY Disney™ COMMUNITY



*Computer-generated image shown; preliminary home concept by Woodbridge Pacific Group, not yet built and subject to change. © Disney*

EXTERIOR: COTINO OASIS COLLECTION



*Computer-generated image shown; preliminary home concept by Woodbridge Pacific Group, not yet built and subject to change. © Disney*

EXTERIOR: COTINO AGRARIAN COLLECTION

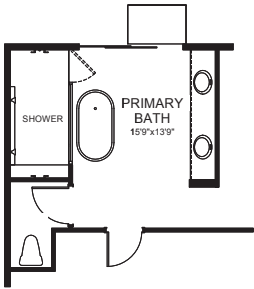
# The Daybreak Home Design

Woodbridge Pacific Group

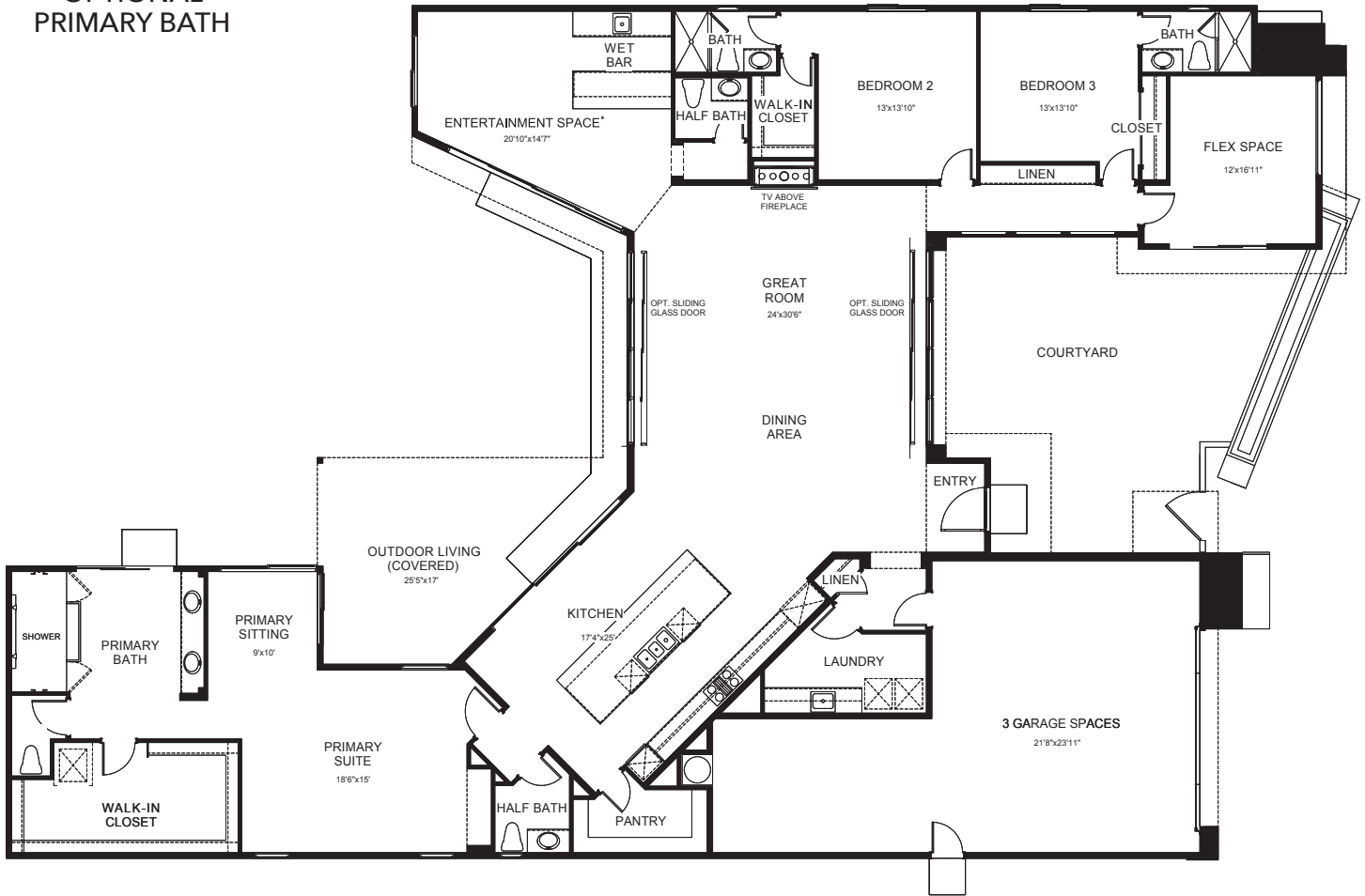
# COTINO™

A STORYLIVING BY Disney™ COMMUNITY

## FLOOR PLAN: COTINO ASPIRON COLLECTION



OPTIONAL  
PRIMARY BATH



\* Entertainment Space = Game Room

Images are for illustration purposes only and may not reflect the details or landscaping of the finished home. No guarantee is made that the features depicted or described will be built, or if built, will be in the same location or of the same type, size or nature depicted or described. Builder reserves the right to change or discontinue plans without notice. Dimensions and square footage are approximate. Features shown may not be included in the base home and may be options to be ordered separately at an additional cost. See a Sales Guide for complete and current information.

# COTINO™

---

A STORYLIVING BY  COMMUNITY

This material contains general information about proposed plans for *Cotino*™, a *Storyliving by Disney*™ community, which plans are subject to change or cancellation in part or whole, at any time without notice. No guarantee is made that the features and amenities depicted or described will be built, or if built, will be the same type, size, or nature as depicted or described. Builders and homes assigned to lots are based on current development plans which are subject to change without notice. Residential community is Disney branded and managed, developed by DMB Development with homes built and sold by third-party builders. The parties developing, and building homes in, *Storyliving by Disney* communities are independently owned and operated. Woodbridge Pacific Group is a participating builder in the *Cotino* community and uses Disney trademarks under a license agreement from Disney. Disney has not confirmed the accuracy of any of the statements or representations made about the homes and does not make any representations or warranties or guarantees whatsoever with respect to the homes. This does not constitute an offer to sell, or a solicitation to buy, real estate to residents of any state, province or jurisdiction where prohibited by law, or where prior registration or filing of a disclosure statement is required, but has not yet been completed. PENNSYLVANIA REGISTRATION No. OL001186. Equal Housing Opportunity. Broker participation welcome. See [StorylivingbyDisney.com](http://StorylivingbyDisney.com) for full details.

*Storyliving by Disney* Realty, CA DRE License No. 02194403. AZ broker: Silverleaf Realty, LLC.

**ALBERTA & BRITISH COLUMBIA RESIDENTS:**

*Cotino*™ community AB & BC broker: Rennie & Associates Realty, 1-888-395-0004

*Cotino* community developer: ECRM Residential, Limited Partnership: 1-480-367-2600. 7600 East Doubletree Ranch Road, #250, Scottsdale, Arizona 85258-2136

# The Daybreak II Home Design

Woodbridge Pacific Group

# COTINO™

A STORYLIVING BY Disney™ COMMUNITY



Computer generated image; preliminary home concept by Woodbridge Pacific Group, not yet built and subject to change. © Disney

## EXTERIOR: COTINO ASPIRON COLLECTION

**4**  
BEDROOMS

**4**  
BATHROOMS

**2**  
½ BATHROOMS

**3**  
GARAGE SPACES

**2**  
STORIES

**4,028\***  
APPROXIMATE SQ.FT.

*Square footage varies by home elevation, see sales guide for details.*

Discover your creative oasis at Cotino™, the first Storyliving by Disney™ community. Enjoy breathtaking mountain views, charming parks and a promenade around Cotino™ Bay, the jewel of the community.

Cotino community welcomes you to experience life with the Disney touch—and make your next chapter the best one yet.

### \* DESIGN COLLECTIONS APPROXIMATE SQ.FT.

Cotino Aspiro Collection	4,028 Sq. Ft.
Cotino Agrarian Collection	4,017 Sq. Ft.
Cotino Oasis Collection	4,017 Sq. Ft.

## THE ESTATE COLLECTION

**wpg** | Woodbridge Pacific Group

## Highlights

- › Beautiful private front courtyard with entry gate
- › Great room with optional sliding glass doors that stack for greater openness to the outdoors; views of both the front courtyard and back yard
- › Primary bedroom with sitting room, spacious bathroom and walk-in closet
- › 2 secondary bedrooms with ensuite bathrooms
- › Expansive kitchen with large, dramatic island
- › Flex space for many uses, such as a game room (includes wet bar and counter seating)
- › Additional flex space for office or personal pursuits
- › Covered outdoor living for indoor/outdoor connectivity
- › 2nd floor private guest suite with living room, kitchenette and balcony (separate outdoor entry)

Obtain the Property Report required by Federal law and read it before signing anything. No Federal agency has judged the merits or value, if any, of this property.

# The Daybreak II Home Design

Woodbridge Pacific Group

# COTINO™

A STORYLIVING BY Disney™ COMMUNITY



Computer generated image; preliminary home concept by Woodbridge Pacific Group, not yet built and subject to change. © Disney

EXTERIOR: COTINO OASIS COLLECTION



Computer generated image; preliminary home concept by Woodbridge Pacific Group, not yet built and subject to change. © Disney

EXTERIOR: COTINO AGRARIAN COLLECTION

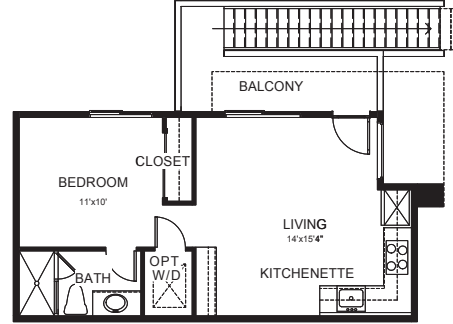
# The Daybreak II Home Design

Woodbridge Pacific Group

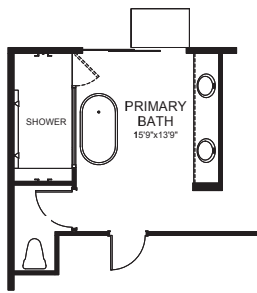
COTINO™

A STORYLIVING BY Disney™ COMMUNITY

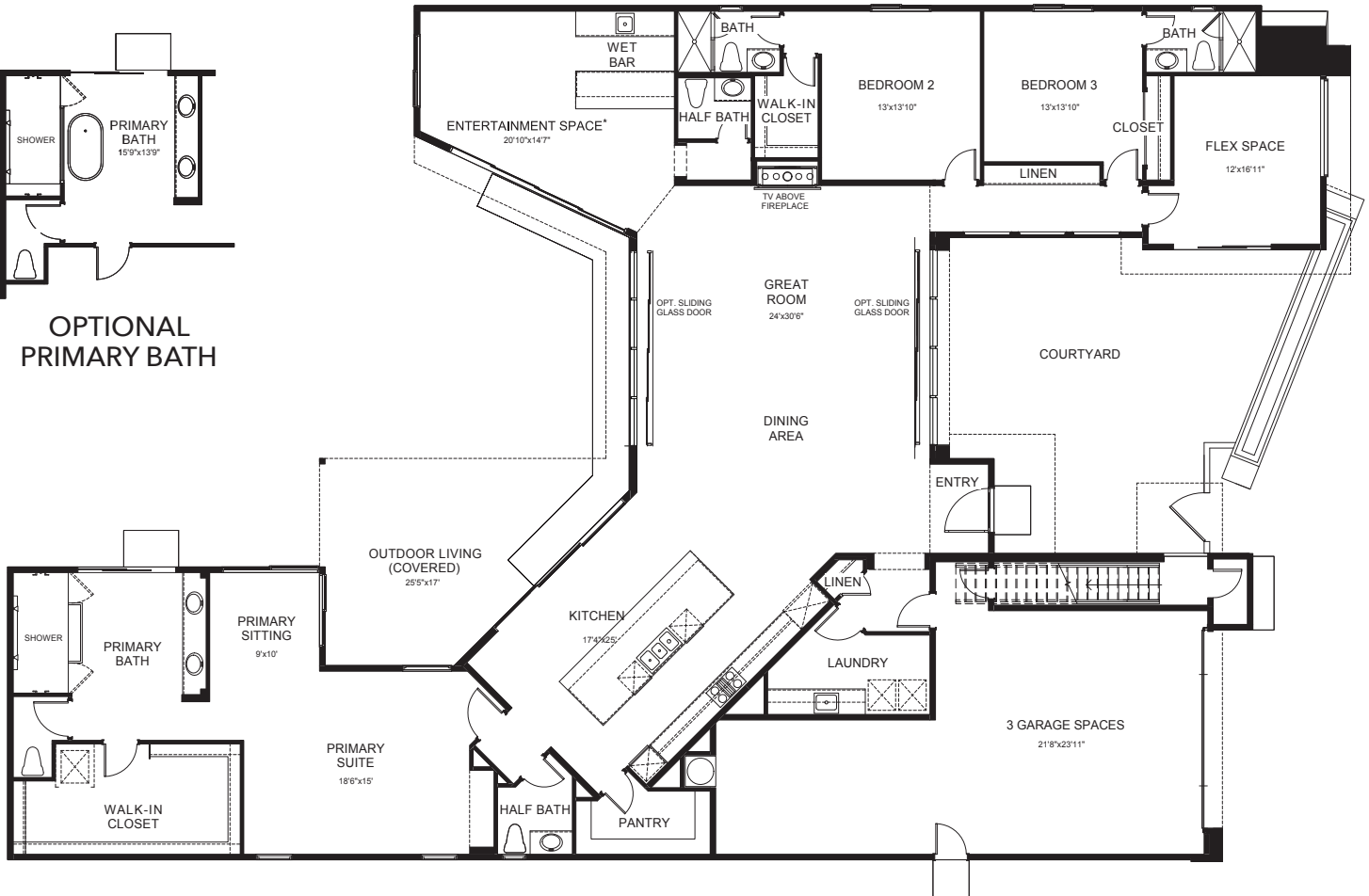
## FLOOR PLAN: COTINO ASPIRON COLLECTION



SECOND FLOOR PRIVATE GUEST SUITE†



OPTIONAL  
PRIMARY BATH



FIRST FLOOR

\* Entertainment Space = Game Room  
† Second Floor Private Guest Suite = Cabana

Images are for illustration purposes only and may not reflect the details or landscaping of the finished home. No guarantee is made that the features depicted or described will be built, or if built, will be in the same location or of the same type, size or nature depicted or described. Builder reserves the right to change or discontinue plans without notice. Dimensions and square footage are approximate. Features shown may not be included in the base home and may be options to be ordered separately at an additional cost. See a Sales Guide for complete and current information.

# COTINO™

---

A STORYLIVING BY  COMMUNITY

This material contains general information about proposed plans for *Cotino*™, a *Storyliving by Disney*™ community, which plans are subject to change or cancellation in part or whole, at any time without notice. No guarantee is made that the features and amenities depicted or described will be built, or if built, will be the same type, size, or nature as depicted or described. Builders and homes assigned to lots are based on current development plans which are subject to change without notice. Residential community is Disney branded and managed, developed by DMB Development with homes built and sold by third-party builders. The parties developing, and building homes in, *Storyliving by Disney* communities are independently owned and operated. Woodbridge Pacific Group is a participating builder in the *Cotino* community and uses Disney trademarks under a license agreement from Disney. Disney has not confirmed the accuracy of any of the statements or representations made about the homes and does not make any representations or warranties or guarantees whatsoever with respect to the homes. This does not constitute an offer to sell, or a solicitation to buy, real estate to residents of any state, province or jurisdiction where prohibited by law, or where prior registration or filing of a disclosure statement is required, but has not yet been completed. PENNSYLVANIA REGISTRATION No. OL001186. Equal Housing Opportunity. Broker participation welcome. See [StorylivingbyDisney.com](http://StorylivingbyDisney.com) for full details.

*Storyliving by Disney* Realty, CA DRE License No. 02194403. AZ broker: Silverleaf Realty, LLC.

**ALBERTA & BRITISH COLUMBIA RESIDENTS:**

*Cotino*™ community AB & BC broker: Rennie & Associates Realty, 1-888-395-0004

*Cotino* community developer: ECRM Residential, Limited Partnership: 1-480-367-2600. 7600 East Doubletree Ranch Road, #250, Scottsdale, Arizona 85258-2136

# The Sandstone Home Design

Woodbridge Pacific Group

COTINO™

A STORYLIVING BY Disney™ COMMUNITY



Computer-generated image shown; preliminary home concept by Woodbridge Pacific Group, not yet built and subject to change. © Disney

## EXTERIOR: COTINO ASPIRON COLLECTION

**3**  
BEDROOMS

**3**  
BATHROOMS

**1**  
½ BATHROOMS

**3**  
GARAGE SPACES

**1**  
STORIES

**3,807\***  
APPROXIMATE SQ.FT.

*Square footage varies by home elevation, see sales guide for details.*

Discover your creative oasis at Cotino™, the first Storyliving by Disney™ community. Enjoy breathtaking mountain views, charming parks and a promenade around Cotino™ Bay, the jewel of the community.

Cotino community welcomes you to experience life with the Disney touch—and make your next chapter the best one yet.

### \* DESIGN COLLECTIONS APPROXIMATE SQ.FT.

Cotino Aspiro Collection	3,807 Sq. Ft.
Cotino Agrarian Collection	3,807 Sq. Ft.
Cotino Coachella Collection	3,807 Sq. Ft.

## THE ESTATE COLLECTION

**wpg** | Woodbridge Pacific Group

## Highlights

- › Entry gate opens to dramatic front yard and entertaining area, maximizing views and privacy
- › Dramatic great room with stunning, stacking glass doors that connect with the covered outdoor living area
- › Primary bedroom with seating area set apart for privacy; generous primary bathroom and walk-in closet
- › 2 secondary bedrooms with ensuite bathrooms
- › Beautiful kitchen with oversized island
- › Large flex space for many uses, such as a game room (includes wet bar and seating area)
- › Additional flex space for multiple lifestyle uses
- › Ample storage including walk-in pantry and linen closet

Obtain the Property Report required by Federal law and read it before signing anything. No Federal agency has judged the merits or value, if any, of this property.

# The Sandstone Home Design

Woodbridge Pacific Group

# COTINO™

A STORYLIVING BY Disney™ COMMUNITY



Computer-generated image shown; preliminary home concept by Woodbridge Pacific Group, not yet built and subject to change. © Disney

EXTERIOR: COTINO AGRARIAN COLLECTION



Computer-generated image shown; preliminary home concept by Woodbridge Pacific Group, not yet built and subject to change. © Disney

EXTERIOR: COTINO COACHELLA COLLECTION

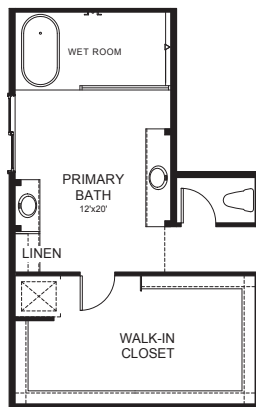
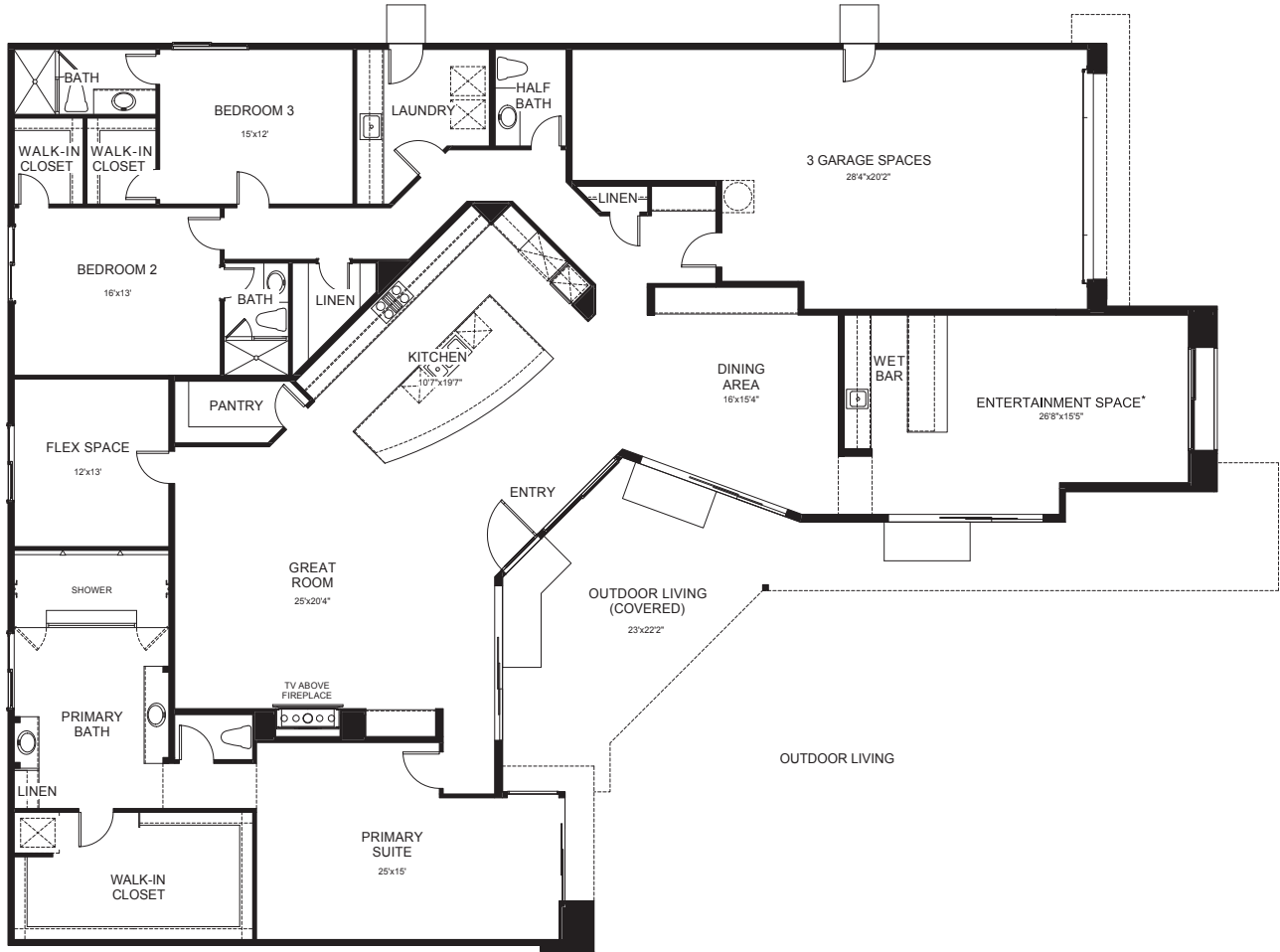
# The Sandstone Home Design

Woodbridge Pacific Group

# COTINO™

A STORYLIVING BY Disney™ COMMUNITY

## FLOOR PLAN: COTINO ASPIRON COLLECTION



**OPTIONAL  
PRIMARY BATH**

\* Entertainment Space = Game Room

Images are for illustration purposes only and may not reflect the details or landscaping of the finished home. No guarantee is made that the features depicted or described will be built, or if built, will be in the same location or of the same type, size or nature depicted or described. Builder reserves the right to change or discontinue plans without notice. Dimensions and square footage are approximate. Features shown may not be included in the base home and may be options to be ordered separately at an additional cost. See a Sales Guide for complete and current information.

# COTINO™

---

A STORYLIVING BY  COMMUNITY

This material contains general information about proposed plans for *Cotino*™, a *Storyliving by Disney*™ community, which plans are subject to change or cancellation in part or whole, at any time without notice. No guarantee is made that the features and amenities depicted or described will be built, or if built, will be the same type, size, or nature as depicted or described. Builders and homes assigned to lots are based on current development plans which are subject to change without notice. Residential community is Disney branded and managed, developed by DMB Development with homes built and sold by third-party builders. The parties developing, and building homes in, *Storyliving by Disney* communities are independently owned and operated. Woodbridge Pacific Group is a participating builder in the *Cotino* community and uses Disney trademarks under a license agreement from Disney. Disney has not confirmed the accuracy of any of the statements or representations made about the homes and does not make any representations or warranties or guarantees whatsoever with respect to the homes. This does not constitute an offer to sell, or a solicitation to buy, real estate to residents of any state, province or jurisdiction where prohibited by law, or where prior registration or filing of a disclosure statement is required, but has not yet been completed. PENNSYLVANIA REGISTRATION No. OL001186. Equal Housing Opportunity. Broker participation welcome. See [StorylivingbyDisney.com](http://StorylivingbyDisney.com) for full details.

*Storyliving by Disney* Realty, CA DRE License No. 02194403. AZ broker: Silverleaf Realty, LLC.

**ALBERTA & BRITISH COLUMBIA RESIDENTS:**

*Cotino*™ community AB & BC broker: Rennie & Associates Realty, 1-888-395-0004

*Cotino* community developer: ECRM Residential, Limited Partnership: 1-480-367-2600. 7600 East Doubletree Ranch Road, #250, Scottsdale, Arizona 85258-2136

# The Westwind Home Design

Woodbridge Pacific Group

# COTINO™

A STORYLIVING BY Disney™ COMMUNITY



Computer-generated image shown; preliminary home concept by Woodbridge Pacific Group, not yet built and subject to change. © Disney

## EXTERIOR: COTINO ASPIRON COLLECTION

**3**  
BEDROOMS

**3**  
BATHROOMS

**2**  
½ BATHROOMS

**3**  
GARAGE SPACES

**1**  
STORIES

**3,985\***  
APPROXIMATE SQ.FT.

*Square footage varies by home elevation, see sales guide for details.*

Discover your creative oasis at Cotino™, the first Storyliving by Disney™ community. Enjoy breathtaking mountain views, charming parks and a promenade around Cotino™ Bay, the jewel of the community.

Cotino community welcomes you to experience life with the Disney touch—and make your next chapter the best one yet.

### \* DESIGN COLLECTIONS APPROXIMATE SQ.FT.

Cotino Aspiro Collection	3,985 Sq. Ft.
Cotino Agrarian Collection	3,985 Sq. Ft.
Cotino Oasis Collection	3,985 Sq. Ft.

## THE ESTATE COLLECTION

**wpg** | Woodbridge Pacific Group

## Highlights

- › Welcoming covered outdoor space opens to expansive yard, maximizing views and privacy
- › Great room with stunning sliding glass doors that stack for greater openness to the outdoors
- › Spacious primary bedroom set apart for privacy; luxurious primary bathroom and walk-in closet
- › Open kitchen with large island
- › 2 secondary bedrooms with ensuite bathrooms and walk-in closets
- › Flex space adjacent to the kitchen with wet bar, counter and seating area
- › Additional flex space for office or personalized uses
- › Garages (including golf cart area) located at the rear of the home to enhance street scene

Obtain the Property Report required by Federal law and read it before signing anything. No Federal agency has judged the merits or value, if any, of this property.

# The Westwind Home Design

Woodbridge Pacific Group

# COTINO™

A STORYLIVING BY Disney™ COMMUNITY



Computer-generated image shown; preliminary home concept by Woodbridge Pacific Group, not yet built and subject to change. © Disney

## EXTERIOR: COTINO OASIS COLLECTION



Computer-generated image shown; preliminary home concept by Woodbridge Pacific Group, not yet built and subject to change. © Disney

## EXTERIOR: COTINO AGRARIAN COLLECTION

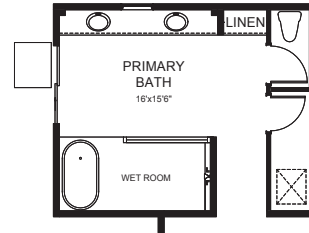
# The Westwind Home Design

Woodbridge Pacific Group

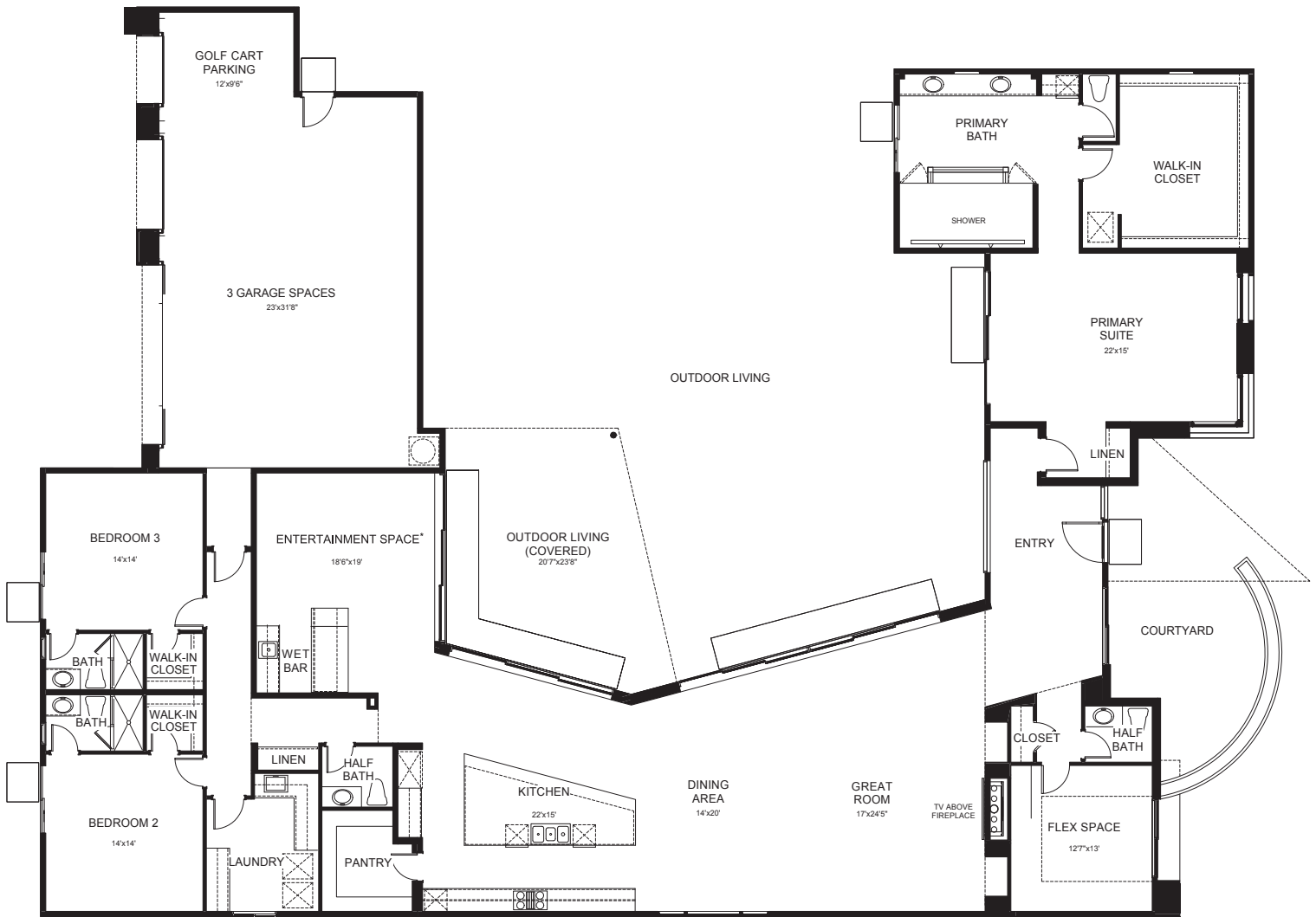
# COTINO™

A STORYLIVING BY Disney™ COMMUNITY

## FLOOR PLAN: COTINO ASPIRON COLLECTION



OPTIONAL PRIMARY BATH



\* Entertainment Space = Game Room

Images are for illustration purposes only and may not reflect the details or landscaping of the finished home. No guarantee is made that the features depicted or described will be built, or if built, will be in the same location or of the same type, size or nature depicted or described. Builder reserves the right to change or discontinue plans without notice. Dimensions and square footage are approximate. Features shown may not be included in the base home and may be options to be ordered separately at an additional cost. See a Sales Guide for complete and current information.

# COTINO™

---

A STORYLIVING BY  COMMUNITY

This material contains general information about proposed plans for *Cotino*™, a *Storyliving by Disney*™ community, which plans are subject to change or cancellation in part or whole, at any time without notice. No guarantee is made that the features and amenities depicted or described will be built, or if built, will be the same type, size, or nature as depicted or described. Builders and homes assigned to lots are based on current development plans which are subject to change without notice. Residential community is Disney branded and managed, developed by DMB Development with homes built and sold by third-party builders. The parties developing, and building homes in, *Storyliving by Disney* communities are independently owned and operated. Woodbridge Pacific Group is a participating builder in the *Cotino* community and uses Disney trademarks under a license agreement from Disney. Disney has not confirmed the accuracy of any of the statements or representations made about the homes and does not make any representations or warranties or guarantees whatsoever with respect to the homes. This does not constitute an offer to sell, or a solicitation to buy, real estate to residents of any state, province or jurisdiction where prohibited by law, or where prior registration or filing of a disclosure statement is required, but has not yet been completed. PENNSYLVANIA REGISTRATION No. OL001186. Equal Housing Opportunity. Broker participation welcome. See [StorylivingbyDisney.com](http://StorylivingbyDisney.com) for full details.

*Storyliving by Disney* Realty, CA DRE License No. 02194403. AZ broker: Silverleaf Realty, LLC.

**ALBERTA & BRITISH COLUMBIA RESIDENTS:**

*Cotino*™ community AB & BC broker: Rennie & Associates Realty, 1-888-395-0004

*Cotino* community developer: ECRM Residential, Limited Partnership: 1-480-367-2600. 7600 East Doubletree Ranch Road, #250, Scottsdale, Arizona 85258-2136

# The Westwind II Home Design

Woodbridge Pacific Group

COTINO™

A STORYLIVING BY Disney™ COMMUNITY



Computer generated image; preliminary home concept by Woodbridge Pacific Group, not yet built and subject to change. © Disney

## EXTERIOR: COTINO ASPIRON COLLECTION

**4**  
BEDROOMS

**4**  
BATHROOMS

**2**  
½ BATHROOMS

**3**  
GARAGE SPACES

**2**  
STORIES

**4,485\***  
APPROXIMATE SQ.FT.

*Square footage varies by home elevation, see sales guide for details.*

Discover your creative oasis at Cotino™, the first Storyliving by Disney™ community. Enjoy breathtaking mountain views, charming parks and a promenade around Cotino™ Bay, the jewel of the community.

Cotino community welcomes you to experience life with the Disney touch—and make your next chapter the best one yet.

### \* DESIGN COLLECTIONS APPROXIMATE SQ.FT.

Cotino Aspiro Collection	4,485 Sq. Ft.
Cotino Agrarian Collection	4,485 Sq. Ft.
Cotino Oasis Collection	4,485 Sq. Ft.

## THE ESTATE COLLECTION

**wpg** | Woodbridge Pacific Group

## Highlights

- › Welcoming covered outdoor space opens to expansive yard, maximizing views and privacy
- › Great room with stunning sliding glass doors that stack for greater openness to the outdoors
- › Spacious primary bedroom set apart for privacy; luxurious primary bathroom and walk-in closet
- › Open kitchen with large island
- › 2 secondary bedrooms with ensuite bathrooms and walk-in closets
- › Flex space adjacent to the kitchen with wet bar, counter and seating area
- › Additional flex space for office or personalized uses
- › Garages (including golf cart area) located at the rear of the home to enhance front elevation appeal
- › 2nd floor private guest suite with living room and kitchenette (accessible via private outdoor entrance at the side yard)

Obtain the Property Report required by Federal law and read it before signing anything. No Federal agency has judged the merits or value, if any, of this property.

# The Westwind II Home Design

Woodbridge Pacific Group

# COTINO™

A STORYLIVING BY Disney™ COMMUNITY



Computer generated image; preliminary home concept by Woodbridge Pacific Group, not yet built and subject to change. © Disney

EXTERIOR: COTINO OASIS COLLECTION



Computer generated image; preliminary home concept by Woodbridge Pacific Group, not yet built and subject to change. © Disney

EXTERIOR: COTINO AGRARIAN COLLECTION

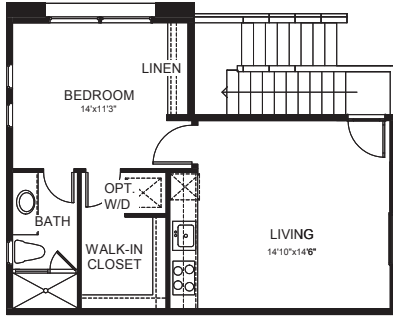
# The Westwind II Home Design

Woodbridge Pacific Group

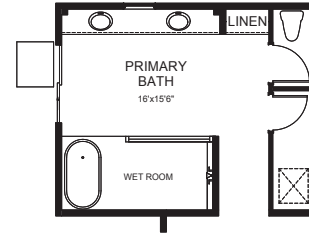
COTINO™

A STORYLIVING BY Disney™ COMMUNITY

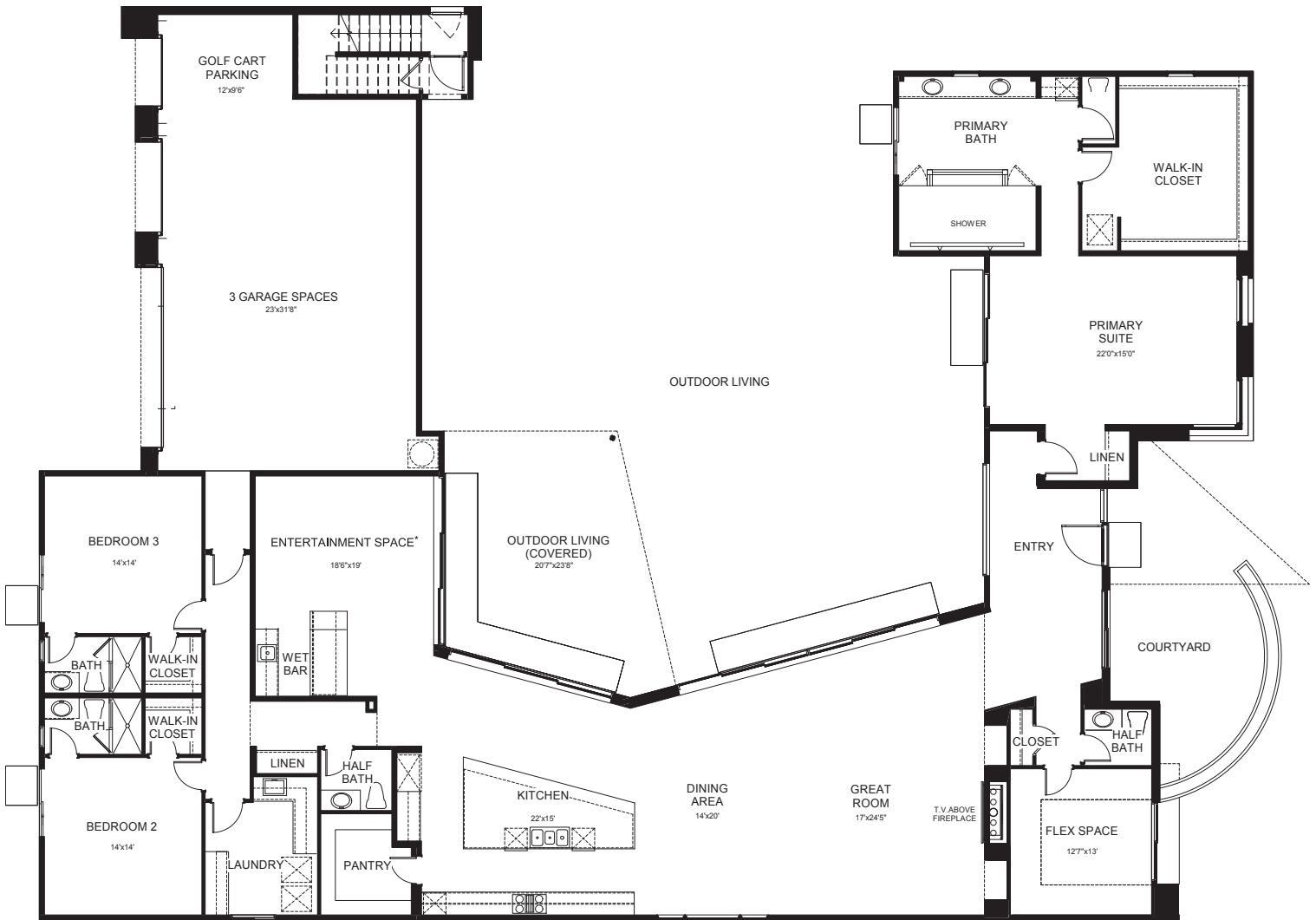
## FLOOR PLAN: COTINO ASPIRON COLLECTION



SECOND FLOOR PRIVATE GUEST SUITE†



OPTIONAL  
PRIMARY BATH



FIRST FLOOR

\* Entertainment Space = Game Room  
† Second Floor Private Guest Suite = Cabana

Images are for illustration purposes only and may not reflect the details or landscaping of the finished home. No guarantee is made that the features depicted or described will be built, or if built, will be in the same location or of the same type, size or nature depicted or described. Builder reserves the right to change or discontinue plans without notice. Dimensions and square footage are approximate. Features shown may not be included in the base home and may be options to be ordered separately at an additional cost. See a Sales Guide for complete and current information.

# COTINO™

---

A STORYLIVING BY  COMMUNITY

This material contains general information about proposed plans for *Cotino*™, a *Storyliving by Disney*™ community, which plans are subject to change or cancellation in part or whole, at any time without notice. No guarantee is made that the features and amenities depicted or described will be built, or if built, will be the same type, size, or nature as depicted or described. Builders and homes assigned to lots are based on current development plans which are subject to change without notice. Residential community is Disney branded and managed, developed by DMB Development with homes built and sold by third-party builders. The parties developing, and building homes in, *Storyliving by Disney* communities are independently owned and operated. Woodbridge Pacific Group is a participating builder in the *Cotino* community and uses Disney trademarks under a license agreement from Disney. Disney has not confirmed the accuracy of any of the statements or representations made about the homes and does not make any representations or warranties or guarantees whatsoever with respect to the homes. This does not constitute an offer to sell, or a solicitation to buy, real estate to residents of any state, province or jurisdiction where prohibited by law, or where prior registration or filing of a disclosure statement is required, but has not yet been completed. PENNSYLVANIA REGISTRATION No. OL001186. Equal Housing Opportunity. Broker participation welcome. See [StorylivingbyDisney.com](http://StorylivingbyDisney.com) for full details.

*Storyliving by Disney* Realty, CA DRE License No. 02194403. AZ broker: Silverleaf Realty, LLC.

**ALBERTA & BRITISH COLUMBIA RESIDENTS:**

*Cotino*™ community AB & BC broker: Rennie & Associates Realty, 1-888-395-0004

*Cotino* community developer: ECRM Residential, Limited Partnership: 1-480-367-2600. 7600 East Doubletree Ranch Road, #250, Scottsdale, Arizona 85258-2136

# The Harmony Home Design

Woodbridge Pacific Group

# COTINO™

A STORYLIVING BY Disney™ COMMUNITY



Computer-generated image shown; preliminary home concept by Woodbridge Pacific Group, not yet built and subject to change. © Disney

## EXTERIOR: COTINO ASPIRON COLLECTION

**3**  
BEDROOMS

**3**  
BATHROOMS

**1**  
½ BATHROOMS

**3**  
GARAGE SPACES

**1**  
STORIES

**3,715\***  
APPROXIMATE SQ.FT.

*Square footage varies by home elevation, see sales guide for details.*

Discover your creative oasis at Cotino™, the first Storyliving by Disney™ community. Enjoy breathtaking mountain views, charming parks and a promenade around Cotino™ Bay, the jewel of the community.

Cotino community welcomes you to experience life with the Disney touch—and make your next chapter the best one yet.

### \* DESIGN COLLECTIONS APPROXIMATE SQ.FT.

Cotino Aspiro Collection	3,715 Sq. Ft.
Cotino Agrarian Collection	3,715 Sq. Ft.
Cotino Oasis Collection	3,715 Sq. Ft.

## THE ESTATE COLLECTION

**wpg** | Woodbridge Pacific Group

## Highlights

- › Enchanting private front courtyard
- › Dramatic great room with stacking glass doors for stunning views of both the courtyard and covered outdoor living space
- › Primary bedroom set apart for privacy includes spacious primary bathroom and walk-in closet
- › 2 secondary bedrooms with ensuite bathrooms and walk-in closets
- › Spacious kitchen with expansive island
- › Large flex space with wet bar, island and seating area opens to outdoor living area
- › Additional flex space for office or personalized uses
- › Garages located at the rear of the home to enhance front elevation appeal

Obtain the Property Report required by Federal law and read it before signing anything. No Federal agency has judged the merits or value, if any, of this property.

# The Harmony Home Design

Woodbridge Pacific Group

# COTINO™

A STORYLIVING BY Disney™ COMMUNITY



*Computer-generated image shown; preliminary home concept by Woodbridge Pacific Group, not yet built and subject to change. © Disney*

EXTERIOR: COTINO AGRARIAN COLLECTION



*Computer-generated image shown; preliminary home concept by Woodbridge Pacific Group, not yet built and subject to change. © Disney*

EXTERIOR: COTINO OASIS COLLECTION

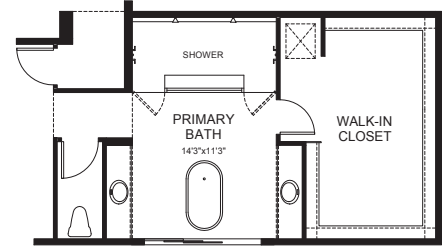
# The Harmony Home Design

Woodbridge Pacific Group

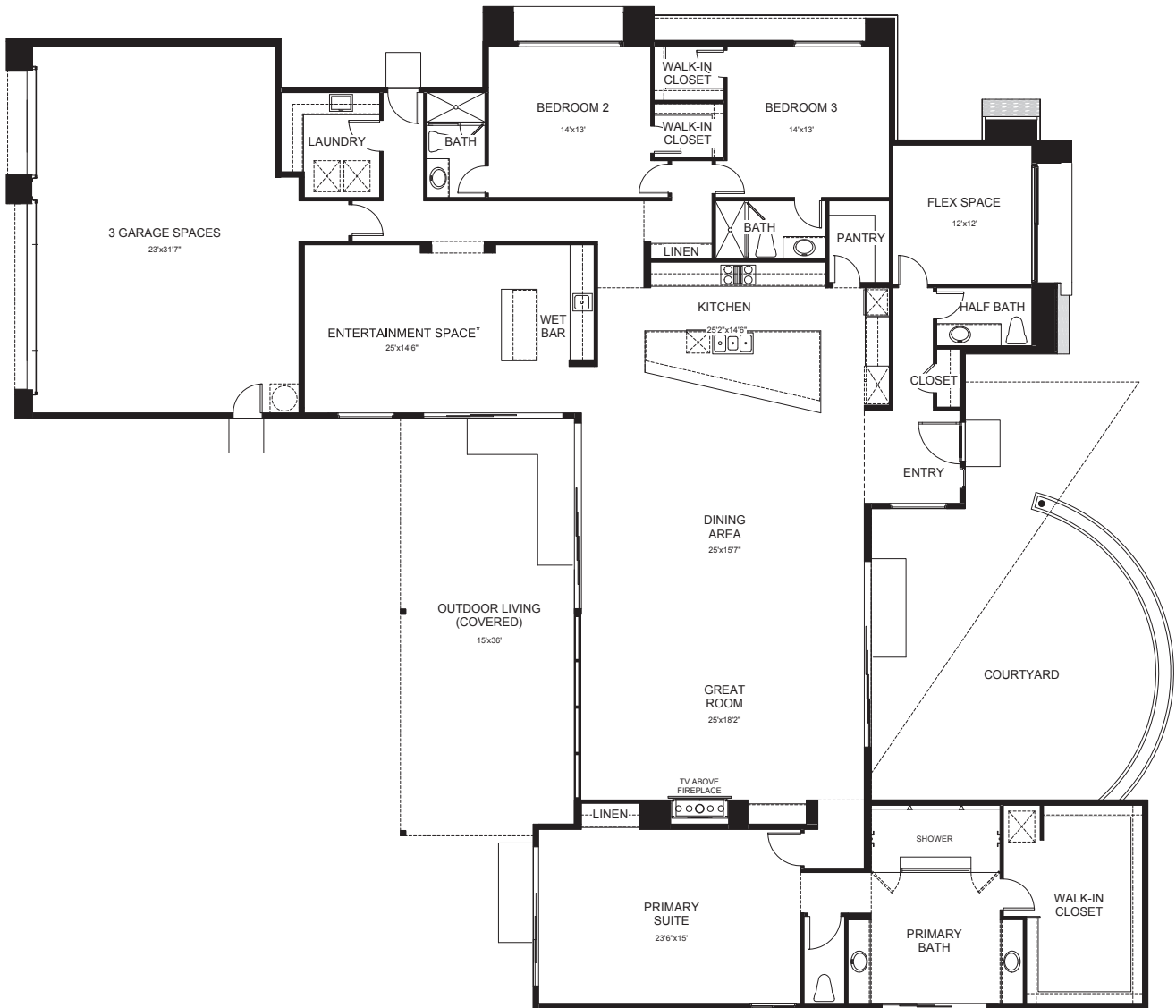
# COTINO™

A STORYLIVING BY Disney™ COMMUNITY

## FLOOR PLAN: COTINO ASPIRON COLLECTION



OPTIONAL  
PRIMARY BATH



FIRST FLOOR

\* Entertainment Space = Game Room

Images are for illustration purposes only and may not reflect the details or landscaping of the finished home. No guarantee is made that the features depicted or described will be built, or if built, will be in the same location or of the same type, size or nature depicted or described. Builder reserves the right to change or discontinue plans without notice. Dimensions and square footage are approximate. Features shown may not be included in the base home and may be options to be ordered separately at an additional cost. See a Sales Guide for complete and current information.

# COTINO™

---

A STORYLIVING BY  COMMUNITY

This material contains general information about proposed plans for *Cotino*™, a *Storyliving by Disney*™ community, which plans are subject to change or cancellation in part or whole, at any time without notice. No guarantee is made that the features and amenities depicted or described will be built, or if built, will be the same type, size, or nature as depicted or described. Builders and homes assigned to lots are based on current development plans which are subject to change without notice. Residential community is Disney branded and managed, developed by DMB Development with homes built and sold by third-party builders. The parties developing, and building homes in, *Storyliving by Disney* communities are independently owned and operated. Woodbridge Pacific Group is a participating builder in the *Cotino* community and uses Disney trademarks under a license agreement from Disney. Disney has not confirmed the accuracy of any of the statements or representations made about the homes and does not make any representations or warranties or guarantees whatsoever with respect to the homes. This does not constitute an offer to sell, or a solicitation to buy, real estate to residents of any state, province or jurisdiction where prohibited by law, or where prior registration or filing of a disclosure statement is required, but has not yet been completed. PENNSYLVANIA REGISTRATION No. OL001186. Equal Housing Opportunity. Broker participation welcome. See [StorylivingbyDisney.com](http://StorylivingbyDisney.com) for full details.

*Storyliving by Disney* Realty, CA DRE License No. 02194403. AZ broker: Silverleaf Realty, LLC.

**ALBERTA & BRITISH COLUMBIA RESIDENTS:**

*Cotino*™ community AB & BC broker: Rennie & Associates Realty, 1-888-395-0004

*Cotino* community developer: ECRM Residential, Limited Partnership: 1-480-367-2600. 7600 East Doubletree Ranch Road, #250, Scottsdale, Arizona 85258-2136

# The Harmony II Home Design

Woodbridge Pacific Group

# COTINO™

A STORYLIVING BY Disney™ COMMUNITY



Computer generated image; preliminary home concept by Woodbridge Pacific Group, not yet built and subject to change. © Disney

## EXTERIOR: COTINO ASPIRON COLLECTION

**4**  
BEDROOMS

**4**  
BATHROOMS

**1**  
½ BATHROOMS

**3**  
GARAGE SPACES

**2**  
STORIES

**4,193\***  
APPROXIMATE SQ.FT.

*Square footage varies by home elevation, see sales guide for details.*

Discover your creative oasis at Cotino™, the first Storyliving by Disney™ community. Enjoy breathtaking mountain views, charming parks and a promenade around Cotino™ Bay, the jewel of the community.

Cotino community welcomes you to experience life with the Disney touch—and make your next chapter the best one yet.

### \* DESIGN COLLECTIONS APPROXIMATE SQ.FT.

Cotino Aspirom Collection	4,193 Sq. Ft.
Cotino Agrarian Collection	4,193 Sq. Ft.
Cotino Oasis Collection	4,193 Sq. Ft.

## THE ESTATE COLLECTION

**wpg** | Woodbridge Pacific Group

## Highlights

- › Enchanting private front courtyard
- › Dramatic great room with stacking glass doors for stunning views of both the courtyard and covered outdoor living space
- › Primary bedroom set apart for privacy includes spacious primary bathroom and walk-in closet
- › 2 secondary bedrooms with ensuite bathrooms and walk-in closets
- › Spacious kitchen with expansive island
- › Large flex space with wet bar, island and seating area opens to outdoor living area
- › Additional flex space for office or personalized uses
- › Garages located at the rear of the home to enhance front elevation appeal
- › 2nd floor private guest suite with living room, kitchenette and balcony (accessible via outdoor side yard)

Obtain the Property Report required by Federal law and read it before signing anything. No Federal agency has judged the merits or value, if any, of this property.

# The Harmony II Home Design

Woodbridge Pacific Group

# COTINO™

A STORYLIVING BY Disney™ COMMUNITY



Computer generated image; preliminary home concept by Woodbridge Pacific Group, not yet built and subject to change. © Disney

EXTERIOR: COTINO AGRARIAN COLLECTION



Computer generated image; preliminary home concept by Woodbridge Pacific Group, not yet built and subject to change. © Disney

EXTERIOR: COTINO OASIS COLLECTION

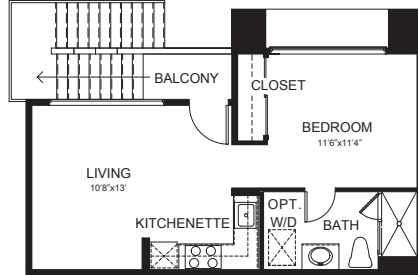
# The Harmony II Home Design

Woodbridge Pacific Group

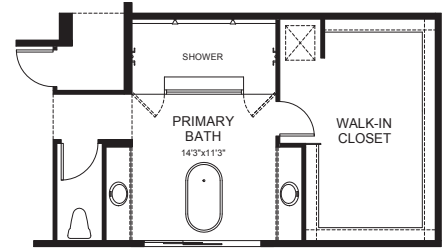
COTINO™

A STORYLIVING BY Disney™ COMMUNITY

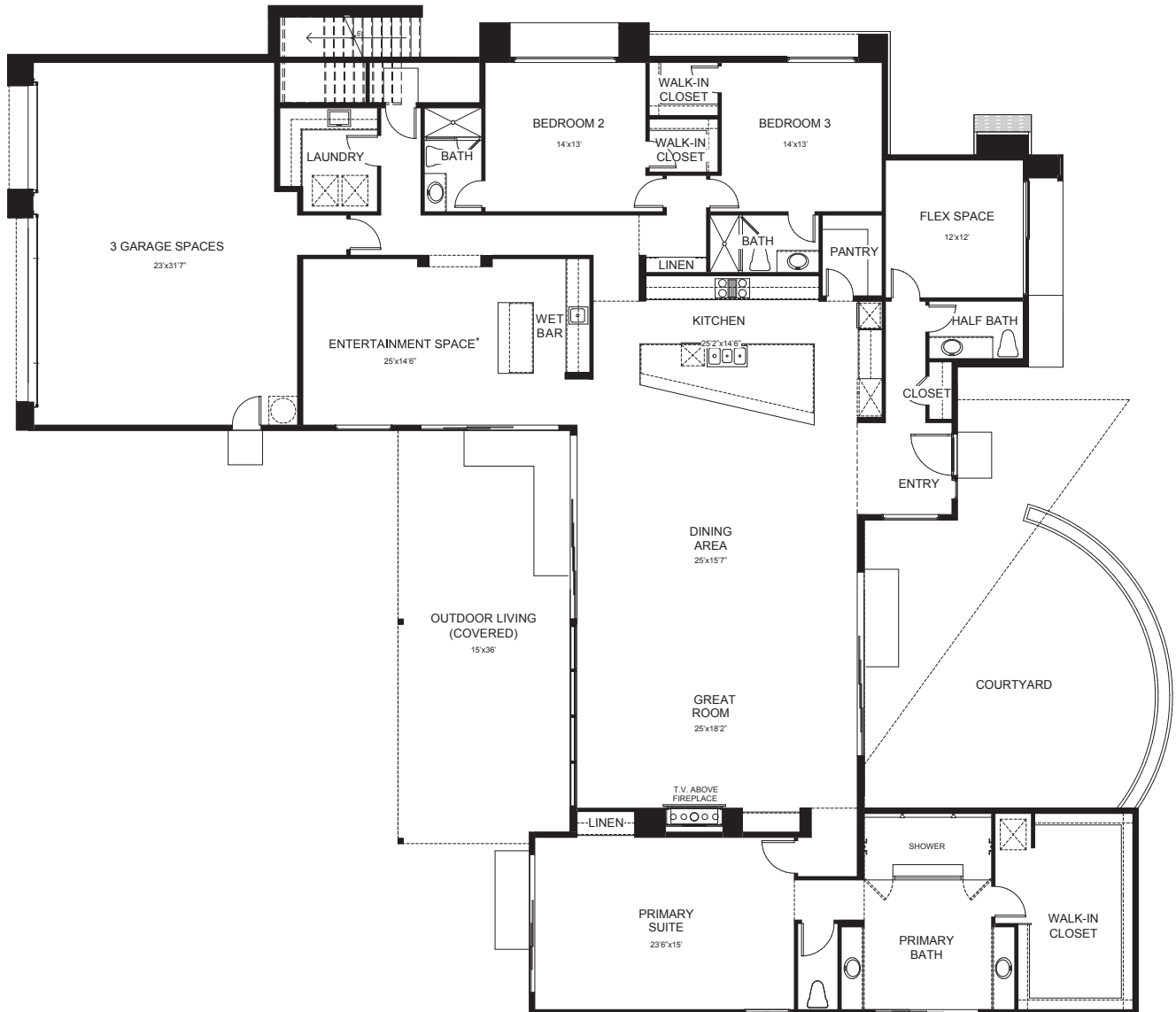
## FLOOR PLAN: COTINO ASPIRON COLLECTION



SECOND FLOOR PRIVATE GUEST SUITE†



OPTIONAL  
PRIMARY BATH



FIRST FLOOR

\* Entertainment Space = Game Room  
† Second Floor Private Guest Suite = Cabana

Images are for illustration purposes only and may not reflect the details or landscaping of the finished home. No guarantee is made that the features depicted or described will be built, or if built, will be in the same location or of the same type, size or nature depicted or described. Builder reserves the right to change or discontinue plans without notice. Dimensions and square footage are approximate. Features shown may not be included in the base home and may be options to be ordered separately at an additional cost. See a Sales Guide for complete and current information.

# COTINO™

---

A STORYLIVING BY  COMMUNITY

This material contains general information about proposed plans for *Cotino*™, a *Storyliving by Disney*™ community, which plans are subject to change or cancellation in part or whole, at any time without notice. No guarantee is made that the features and amenities depicted or described will be built, or if built, will be the same type, size, or nature as depicted or described. Builders and homes assigned to lots are based on current development plans which are subject to change without notice. Residential community is Disney branded and managed, developed by DMB Development with homes built and sold by third-party builders. The parties developing, and building homes in, *Storyliving by Disney* communities are independently owned and operated. Woodbridge Pacific Group is a participating builder in the *Cotino* community and uses Disney trademarks under a license agreement from Disney. Disney has not confirmed the accuracy of any of the statements or representations made about the homes and does not make any representations or warranties or guarantees whatsoever with respect to the homes. This does not constitute an offer to sell, or a solicitation to buy, real estate to residents of any state, province or jurisdiction where prohibited by law, or where prior registration or filing of a disclosure statement is required, but has not yet been completed. PENNSYLVANIA REGISTRATION No. OL001186. Equal Housing Opportunity. Broker participation welcome. See [StorylivingbyDisney.com](http://StorylivingbyDisney.com) for full details.

*Storyliving by Disney* Realty, CA DRE License No. 02194403. AZ broker: Silverleaf Realty, LLC.

**ALBERTA & BRITISH COLUMBIA RESIDENTS:**

*Cotino*™ community AB & BC broker: Rennie & Associates Realty, 1-888-395-0004

*Cotino* community developer: ECRM Residential, Limited Partnership: 1-480-367-2600. 7600 East Doubletree Ranch Road, #250, Scottsdale, Arizona 85258-2136